

---

“TEPRA Label Editor SPC10”  
SPC10-API function  
User’ s Guide

---

## Contents

"SPC10-API function" .....	1
Printing Command .....	2
LW1 file .....	4
CSV file .....	5
Preferences .....	5
Printer Settings.....	5
Extention function .....	7

### **“SPC10-API function”**

“SPC10-API function” (dynamic data link) allows you to print a layout file (the file extension is “LW1”) and CSV file (Data file) specifying the number of copies without opening the edit window of “TEPRA Label Editor SPC10”.

Moreover, you can run “SPC10-API function” from another application such as Excel and Access using VBA, or from an application created using VisualBasic, and Visual C++.

For instructions on the basic operations of “TEPRA Label Editor SPC10” and Windows OS, refer to the manuals that came with the software or the help of windows.

All features and specifications described are subject to change without notice.

## Printing Command

Two printing commands are provided.

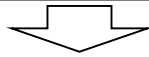
### ■ /pt option

“/pt option” is Microsoft Windows standard printing action.

It allows you to print on the printer specified in the command.

<Description example>

```
"C:\Program Files (x86)\KING JIM\TEPRA Label Editor SPC10\SPC10.exe"/pt  
"D:\sample.lw1,D:\data.csv,2" "KING JIM SR5900GS"
```



"Full path of SPC10"/pt\_"Full path of .LW1 file,Full path of CSV file,the number of copies"\_printer name"

### Caution

Replace the underscores “\_” with spaces.

If you do not specify full path of the .LW1 file and the CSV file, the file may not be found and not be printed. Specify each of the files by using the full path, or copy the files to the folder where “TEPRA Label Editor SPC10” program files are located and specify the .LW1 and CSV file names.

Do not change the order of the .LW1 file, the CSV file, and the number of copies.

The number of copies can be omitted. When omitted, only one copy is printed.

If a wrong command is used or the CSV file cannot be found, a message saying “Invalid argument.” will appear.

As to the printer name, specify the name displayed in the printer list of Control Panel.

### <Printer used when the specified printer driver has not been installed>

If the printer driver other than the specified one is found, the file is printed on the printer. When more than one printer drivers have been installed, the driver last used with SPC10 or the one found first is used. If no printer driver is found, the printer driver specified as “default printer” is used.

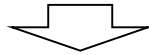
When the specified label printer is offline, a message saying “The printer is turned off, not in PC link mode, or not connected. Printing canceled.” will appear.

■ /p option

“/p option” is Microsoft Windows standard printing action.

The printer to be used is automatically chosen according to circumstances.

<Description example>  
 "C:\Program Files (x86)\KING JIM\TEPRA Label Editor SPC10\SPC10.exe"/p  
 "D:\sample.lw1,D:\data.csv,2"



"Full path of SPC10"/p\_"Full path of .LW1 file,Full path of CSV file,the number of copies"

**Caution**     Replace the underscores “\_” with spaces.

If you do not specify full path of the .LW1 file and the CSV file, the file may not be found and not be printed. Specify each of the files by using the full path, or copy the files to the folder where “TEPRA Label Editor SPC10” program files are located and specify the .LW1 and CSV file names.

Do not change the order of the .LW1 file, the CSV file, and the number of copies.

The number of copies can be omitted. When omitted, only one copy is printed.

If a wrong command is used or the CSV file cannot be found, a message saying “Invalid argument.” will appear.

<How the printer is selected>

Priority level	“Default printer” setting	Printer to be selected
1	Printer other than “TEPRA”	“TEPRA” which is currently online
2	“TEPRA”	The default printer (“TEPRA”)
3	Printer other than “TEPRA” (SPC10 have been started up once or more)	“TEPRA” used last time
4	Printer other than “TEPRA” (SPC10 have never been started up)	“TEPRA” found first

If “TEPRA” is not installed, printing is not performed.

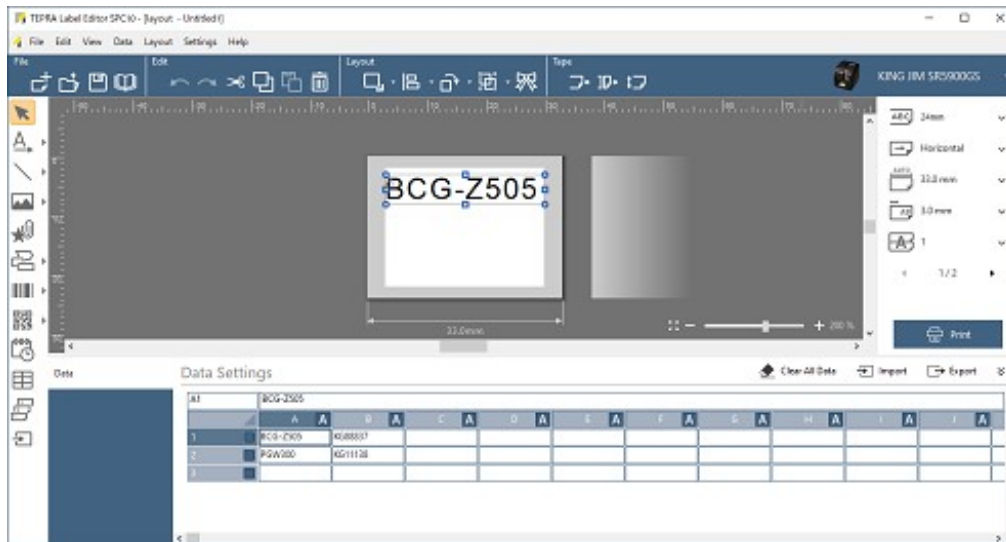
When the chosen printer is offline, a message saying “The printer is turned off, not in PC link mode, or not connected. Printing canceled.” will appear.

## LW1 file

This is a layout file that is created using Label Editor.

Start “TEPRA Label Editor SPC10” and open the layout editing window from the Import Data menu and create a layout label for import.

\* For instructions on how to create the layout file, refer to the manual or help of SPC10.



### Caution

Depending on the amount of import data, the contents such as characters and barcodes may become smaller. Adjust the size of “import frame” according to the amount of import data.

If it is detected that barcodes will change in size when they are printed, a message saying “The size of barcodes may change when printing. Continue printing?” will appear. Adjust the size of “import frame” if needed.

### Notes on creating the .LW1 file for using with “SPC10-API function”

- “column attributes” of a layout file are used by “SPC10-API function”. (Make sure to set up the “column attributes” in advance.)
  - Even if data are already entered in the data creation window of your layout file, they are overwritten with the contents of the CSV file. The print check marks of the column attribute on the data creation window also become invalid, and all the data of the CSV file will be printed.
  - If you have a layout file in the previous format (TPE file), you can use with “SPC10-API” function using a TPE file instead of an LW1 file.
- \* When printing from “SPC10-API” using a TPE file, some layouts may be changed.

## CSV file

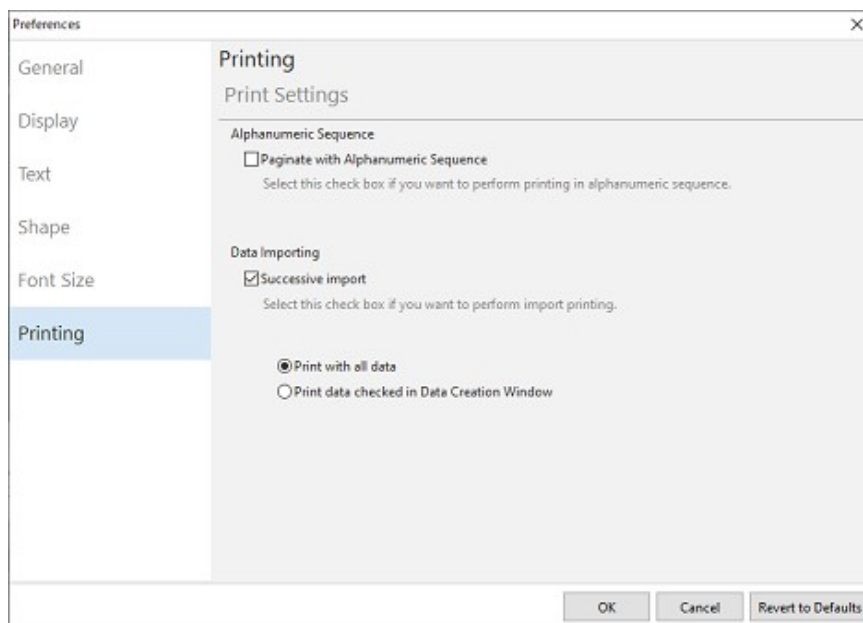
This is a data file in CSV format (comma separated values, tab separated values) which performs “SPC10-API function”. Import the CSV data in the data creation window of a layout file sequentially from the first row of the CSV file.

When creating and printing codes such as QR Code, MaxiCode, PDF417, and Data Matrix, you can insert line break in the codes using “\r\n”, “\r”, or “\n”. (Convert “¥r¥n” to CR+LF, “¥r” to CR, and “¥n” to LF.)

## Preferences

- Alphanumeric Sequence Settings

When printing “Alphanumeric Sequence”, make the settings on the Preferences dialog of “TEPRA Label Editor SPC10”.



## Printer Settings

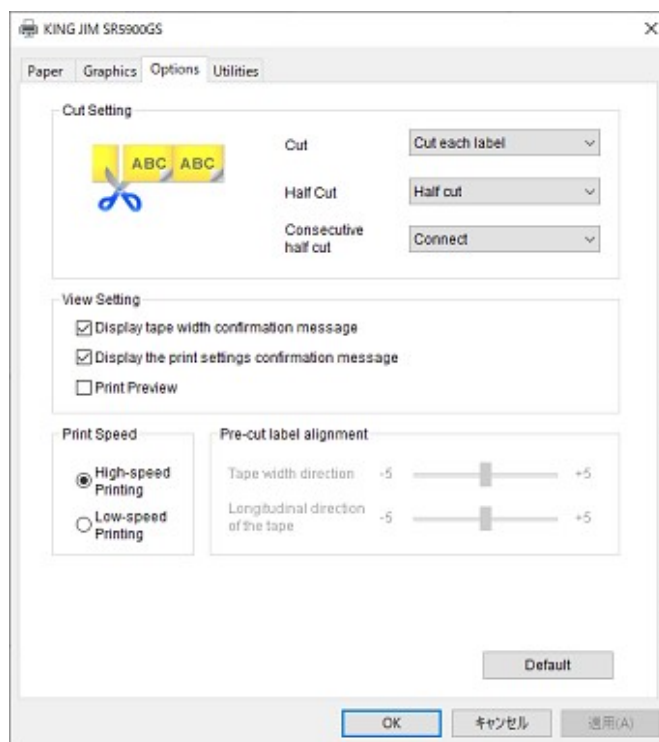
- Install the printer driver.
- Change the printer “Options” settings

When “SPC10-API function” is used, a print dialog is not displayed.

If you want to change the settings, such as cut setting and view setting, you need to make the settings in advance on the Properties dialog of the printer.

- (a) Select [Devices] – [Printers & scanners] in the [Windows Settings] screen.
- (b) Click label printer used for printing, and select [Manage].
- (c) Select [Printing preferences].
- (d) Printing Preferences dialog is displayed.

Click each tab and make necessary settings.



## Extension function

You can run the following functions by adding the option to printing command.

No.	option	function
1	/F	Feed tape
2	/FC	Feed and Cut tape
3	/GT [Name and location]	File output of Tape Width
4	/IP [Name and location]	File output of "import frame"
5	/B [Page Setting] [Name and location]	Output of Print preview BMP file
6	/L [Name and location]	File output of print result
7	/C [Full Cut Setting] [Half Cut Setting]	Cut Setting
8	/TW [Display Setting]	Display Setting of tape width confirmation message
9	/E [Display Setting] [Name and location]	Display Setting of error message, File output of error message

### <Usage rules>

Insert comma and space after "/p and /pt option". Enter separated by space between each option then.

Enclose whole of extension function in "double quotes". Separate by commas between options.

### <Description example>

```
"C:\Program Files (x86)\KING JIM\TEPRA Label Editor SPC10\SPC10.exe"/p
"D:\sample.lw1,D:\data.csv,2, /B -a D:\temp,/TW -off"
```

### Caution

Please run the command in the online of printer state.

Please do not skip specified .LW1 file, CSV file, the number of copies.



1. Feed tape

Feed tape is performed to the printer to be used.

■ option

/F

2. Feed and Cut tape

Feed and cut tape is performed to the printer to be used.

■ option

/FC

3. File output of Tape Width

Get Tape Width is performed to the printer to be used.

The result is saved at a text file.

■ option

/GT\_[Name and location]

\*Replace the underscores “\_” with spaces

Name and location:

\*Specify full path.

\*.txt extension is required.

Ex) /GT D:\temp\tapewidth.txt

■ save file specification

– Unicode (UTF-16) text format

– Contents

The 1st line is tape width. The 2nd line is tape kind.

[tape width]\_[string]

[tape kind]\_[string]

\*Replace the underscores “\_” with spaces.

1st line [tape width]\_[string]

0x00\_None  
0x01\_6mm  
0x02\_9mm  
0x03\_12mm  
0x04\_18mm  
0x05\_24mm  
0x06\_36mm  
0x07\_50mm  
0x0B\_4mm  
0xFF\_Unknown

2nd line [tape kind]\_[string]

0x01_Pre-cut_label	Pre-cut label
0x02_Transfer_tape	Transfer tape
0x00_Standard_tape	Except the above

\*Replace the underscores “\_” with spaces.

Ex) The case of standard 12mm tape

0x03\_12mm  
0x00\_Standard\_tape

■ saved file location

- Overwrite if the same name file already exists.
- Error message appears if the file cannot be created by reason of access rights, etc.

4. File output of “import frame”

Save “Column No.”, “Column Title”, and “Column Attribute” of “import frame” in the layout file (.lw1).

■ option

/IP\_[Name and location]

\*Replace the underscores “\_” with spaces.

Name and location:

\*Specify full path.

\*.txt extension is required.

Ex) /IP D:\temp\importlog.txt

■ save file specification

- Unicode (UTF-16) text format
- Output the file name to the top of the file.
- Contents

[Column No.]:[Column Title]:[Column Attribute][Line feed code]

Column No	A, B, C, D
Column Title	Column Title
Column Attribute	Text, Image, Barcode

■ saved file location

- Overwrite if the same name file already exists.
- Error message appears if the file cannot be created by reason of access rights, etc.

5. Output of Print preview BMP file

Save the content of printing by BMP file.

■ option

/B\_[Page Setting]\_[Name and location]

\*Replace the underscores “\_” with spaces.

Page Setting: -a \*Full page  
x:y \*x is the start page, y is the end page.

Name and location:

\*Specify full path.

\*.bmp extension is automatically appended when the file is output.

Ex) /B 4:5 D:\temp\File

■ save file specification

- Monochrome bitmap
- Numbered automatically at the end of the file name.

Ex) If \temp\File File1.bmp, File2.bmp, File3.bmp

■ saved file location

- Overwrite if the same name file already exists.
- Error message appears if the file cannot be created by reason of access rights, etc.

## 6. File output of print result

Save the result of printing at a text file.

■ option

/L\_[Name and location]

\*Replace the underscores “\_” with spaces.

Name and location:

\*Specify full path.

\*.txt extension is required.

Ex) /L D:\temp\printlog.txt

■ save file specification

- Unicode (UTF-16) text format
- Contents

[Print result][Line feed code]

Print result      0[Tab]succeed

                  1[Tab]fail

■ saved file location

- Overwrite if the same name file already exists.
- Error message appears if the file cannot be created by reason of access rights, etc.

## 7. Cut Setting

Set the operations of full cut and half cut.

If this option is not specified, follow the setting of the driver.

### ■ option

Half Cut supported Printer: /C\_[Full Cut Setting]\_[Half Cut Setting]

Half Cut unsupported Printer: /C\_[Full Cut Setting]

\*Replace the underscores “\_” with spaces.

Full Cut Setting:	(Cut each label)	-f
	(Cut after job)	-fj
	(Don't cut)	-fn
Half Cut Setting	(Half cut)	-h
	(Don't half cut)	-hn

Ex) /C -f -hn

## 8. Display Setting of tape width confirmation message

Set whether to display tape width confirmation message.

If this option is not specified, follow the setting of the driver.

### ■ option

/TW\_[Display Setting]

\*Replace the underscores “\_” with spaces.

Display Setting:	(Display message)	-on
	(Not display message)	-off

Ex) /TW -off

## 9. Display Setting of error message, File output of error message

Set whether to display error message when printing.

Error message is saved at a text file.

■ option

/E\_[Display Setting]\_[Name and location]

\*Replace the underscores “\_” with spaces.

Display Setting: (Display message) -on  
(Not display message) -off

Name and location:

\*Specify full path.

\*.txt extension is required.

Ex) /E -off D:\temp\E\_log.txt

■ save file specification

- Unicode (UTF-16) text format

- Contents

[Time stamp]\_[error No.]\_[error message]

\*Replace the underscores “\_” with spaces.

Time stamp: Date and time (YYYY/MM/DD\_hh:mm:ss)

error No.: Number indicating the error

error message: string of error message

■ saved file location

- Overwrite if the same name file already exists.

- Error message appears if the file cannot be created by reason of access rights, etc.

- If you don't save error message file, it's possible to omit the option of [Name and location]

- Even display setting is off, error message display if the file cannot be created.

“KING JIM” and “TEPRA” are trademarks or registered trademarks of KING JIM CO., LTD.

“Microsoft” and “Windows” trademarks or registered trademarks of Microsoft Corporation in the United States and other countries.

“QR Code” is registered trademark of DENSO WAVE INCORPORATED in Japan and other countries.

Other company names and product names are trademarks or registered trademarks of the respective companies.

**“TEPRA Label Editor SPC10”**  
**SPC10-API function User's Guide**  
**October 31, 2023**

**Copyright 2023 KING JIM CO.,LTD.**